



Circular Furniture & Interior Design

3days of design



Lifestyle & Design Cluster.
Denmark

Circular Furniture & Interior Design

Meet the Furniture and Interior Design of the Future

Climate changes, sustainability and circular economy is on the agenda everywhere these days. With good reason. At the same time, however, to many people these words are just buzzwords. We know we need to eat less meat; we need to recycle, fly less and sort our trash. There is a lot of things we need to do. So much that it can all be a bit confusing. We understand that. Which is also the reason we want to show you that it doesn't have to be that hard.

During 3daysofdesign we're showing everybody that Danish furniture and interior design brands are doing what they can to make an impact in the world. Or a smaller impact, actually. That's what it's all about.

Brands are already making it easier for us to choose the conscious product when we are shopping. Some of these brands are in this museum today to show you what they are doing to improve the world we live in. Step by step. Slowly. But steady. We are getting there.

All the exhibitors are working with circular economy and/or sustainability in one form or another. As you will discover it is a big and rather diverse world, that both include sustainable business plans, reused materials and products made of things you couldn't imagine being used in that way. That's the beauty of circular economy. And it's already creating the furniture and interior design of tomorrow.

Mød morgendagens møbler og indretningsdesign

Den danske designbranche har i mange år været en magtfaktor på scenen for møbler og interiør. Nu er tiden i verden kommet til, at den også bliver det, når det handler om mere end kun design. For æstetik og bæredygtighed er i disse klimakrisetider nødt til at smelte sammen til én og samme tanke, hvis vi også i fremtiden skal have smukke, æstetiske møbler at leve for og med. Uden at belaste klimaet mere end højst nødvendigt.

For rigtigt at forstå, at smukke møbler sagtens kan skabes af genbrugelige materialer ud fra tanker om cirkulær økonomi, har vi i Lifestyle & Design Cluster samlet et udvalg af de stærkeste, danske møbel- og

interiørproducenter til en udstilling under 3daysofdesign med producenter, der allerede har taget de første spadestik til en miljømæssig mere forsvarlig produktion af de produkter, vi alle omgiver os med dagligt.

Udstillingen tager sit afsæt i udfordringen om, hvordan vi forholder os til æstetik og klimaforandringer i samme åndedrag. For hvilke firmaer er det, der går forrest i kampen for mere bæredygtigt producerede møbler? Disse firmaer kan du møde til vores udstilling, der har fået titlen Circular Furniture & Interior Design. Du finder os på Københavns Museum, der stadig er lukket for offentligheden, men som venligst har udlånt lokaler til det gode, cirkulære formål.



THE EXHIBITION IS CREATED IN COOPERATION WITH:
3DAYSOFDISEIGN, SPACON&X, SANO & KØBENHAVNS MUSEUM



Circular Furniture & Interior Design

A Circular Concept

Focused on sustainability and circular economy, the exhibition is kept as neutral as possible in terms of energy and values. With respect for the venue and its atmosphere, the light setting will be natural. Few light installations are part of the exhibition as exhibited products. Flow will be created from daylight, which will lead, distribute, and invite visitors to explore the exhibition. The alternating light will contribute to set a mood, create tension, and support the story of each room and its history. The choice of Aluthermo as a returning material reinforces the effects of daylight via mirrored reflections that frame and highlight the different elements of the exhibition. The ongoing renovation of the house is meant to set the mood

for the exhibition referencing construction sites and temporality. The expression will be reflective, raw, and honest. Contrasting the existing aesthetics will force visitors to take a stand, notice, and remember. A story of the condition, history, and development of the house.

Aluthermo Quattro have sponsored 50 square metres of their Aluthermo-material for the exhibition. Aluthermo is primarily known from the flight industries because of its reflective surface, insolation properties, and minimal volume and weight. After the exhibition, the material will circulate as it will be put to use in a renovation project.

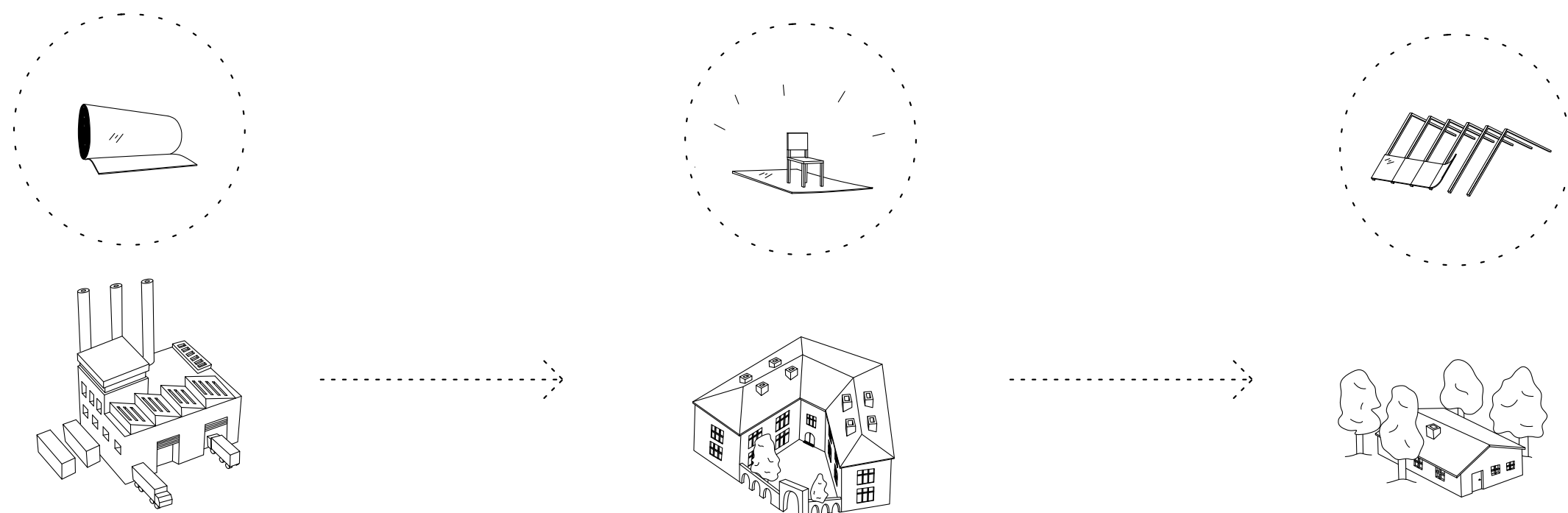
Et cirkulært concept

Med fokus på cirkulær økonomi og bæredygtighed er udstillingen holdt så energineutral som mulig. I respekt for stedet og dets sfære, vil belysningen være naturlig. De få lysinstallationer, der vil indgå i udstillingen, vil være udstillede produkter. Flowet skal skabes af dagslys, som vil lede, fordele og invitere til at gå på opdagelse. Vekslede lysindfald vil være med til at sætte en stemning, skabe spænding og understøtte fortællingen om hvert enkelt rum og dets historie.

Valget af Aluthermo som gennemgående materiale, skal forstærke effekten af dagslysindfald via refleksioner og spejlinger, som på gulvet ydermere vil frame og oplyse det udstillede.

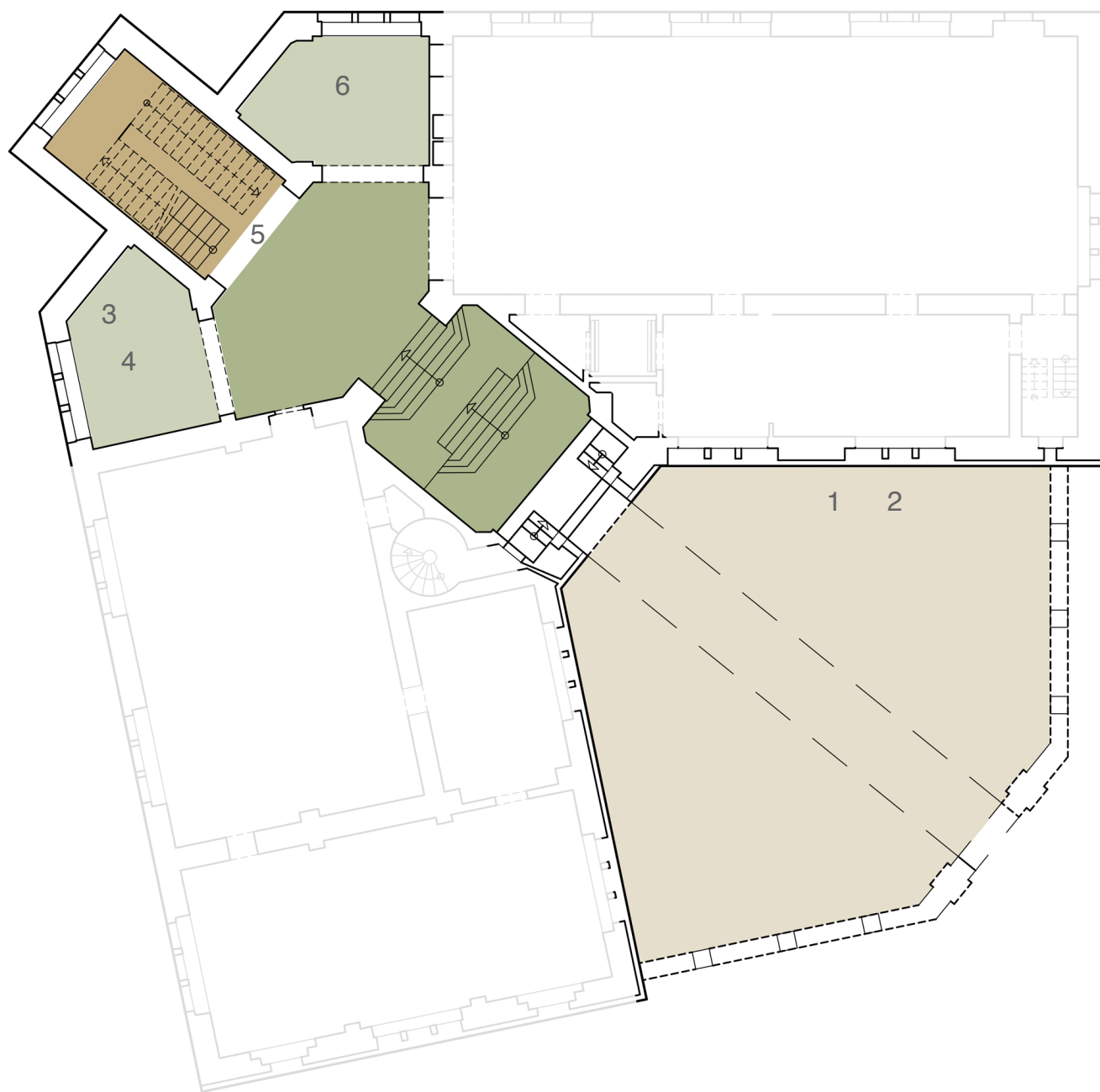
Den igangværende renovering i huset skal sætte stemningen for udstillingen med vibrationer af byggeplads og midlertidighed. Udtrykket vil være reflekterende, rå og ærligt. De kontrastfyldte tiltag til eksisterende æstetik vil tvinge beskuer til at tage stilling, lægge mærke til og huske. En sand historie om husets historie, tilstand og udvikling.

Til udstillingen er sponsoreret 50kvm Aluthermo Quattro fra selv samme firma. Aluthermo er primært kendt fra rum- og flyindustrien med dets refleksive flade af minimal tykkelse og vægt med høj isoleringsevne. Efter udstillingen vil materialet cirkulere og videregives til renoveringsprojekt af et sommerhus.

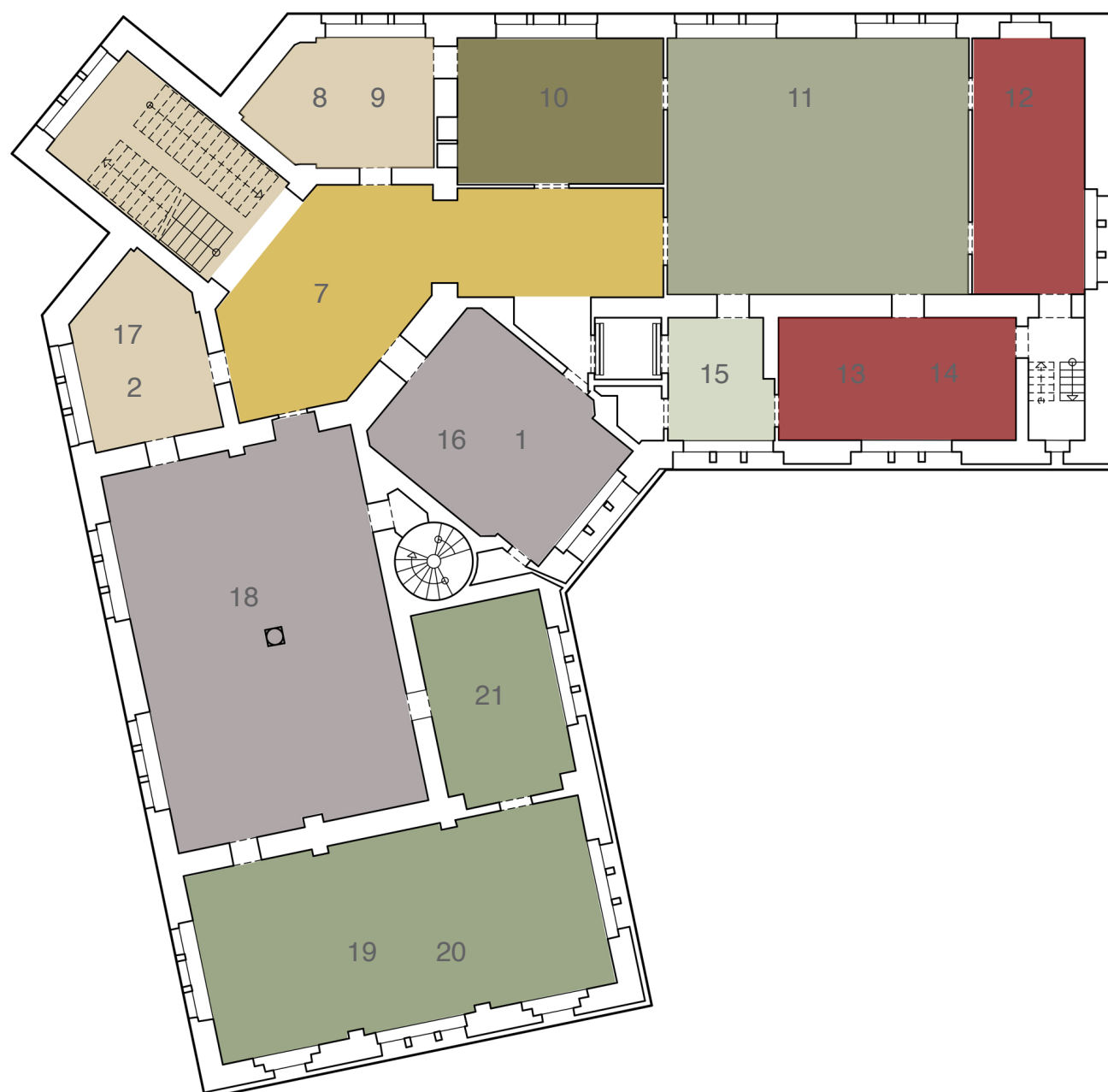


THE EXHIBITION IS CREATED IN COOPERATION WITH:
3DAYSOFDDESIGN, SPACON&X, SANO & KØBENHAVNS MUSEUM

Circular Furniture & Interior Design



- 1 Thors Design
- 2 We:Do:Wood
- 3 Rikke Ruhwald
- 4 Form + Refine
- 5 EPJ Design
- 6 Jonas Edvard



- 7 Wehlers
- 8 Edison & Co.
- 9 Bolia
- 10 Encoded
- 11 Hay
- 12 Randers + Radius
- 13 Upcycling Scandinavia
- 14 Dencon
- 15 Hansen Living
- 16 Lübeck Living
- 17 2rethink furniture
- 18 Muuto
- 19 Mater // ARDE
- 20 Rug Solid
- 21 Warm Nordic

THE EXHIBITION IS CREATED IN COOPERATION WITH:
3DAYSOFDDESIGN, SPACON&X, SANO & KØBENHAVNS MUSEUM

DENCON

The series V7 desk is Dencon's new unique solution where design and functions are intended for the modern (dynamic) office of the future.

The human design is incorporated into every detail so the desk is both comfortable to look and work at. It is designed to last for many years using high quality components and material. Using few components supports a better way of recycling cradle to cradle. With the latest technology. The desk series is designed by Michael H. Nielsen MDD.

How are we circular?

- _recycled wood & metal
- _longlasting design
- _can be leased
- _PVC free

X MATER

ARDE

The Nova Chair Nova is designed by the Danish design studio ARDE. Nova means 'new' and refers to the innovative and sustainable technique of moulding 3D veneer. Nova stacks perfectly and is available in a choice of three different stains.

Nova is made of upcycled excess pieces of FSC certified beech veneer, sliced and glued together in a delicate and patented process - thus creating a textual and organic looking surface. The result ensures a beautiful exploitation of raw materials and minimize the amount of waste in veneer production, reducing our ethical footprint and any adverse impact on the environment and Mother Earth. Further the saddle spacers are made of rubber from up-cycled car tires.

How are we circular?

- _moulding 3D veneer
- _reused materials
- _upcycled car tires

WARM NORDIC

This beautiful, moulded Gesture Chair, designed in 1957, was the work of the acclaimed Danish architect, Hans Olsen.

Gesture Chair is now available in an anniversary edition with a sustainable fabric launched to celebrate the 100th anniversary of Hans Olsen. The anniversary edition of the Gesture Chair is constructed of black lacquered beech in FSC mix-certified wood, with leather upholstery on the back and a sustainable fabric from Kvadrat on the seat. The fabric, Merit by Maharam Design Studio is made of 76 percent recycled polyester, which has been turned into thick, soft yarn from clothing scraps, among other things, and has a wool-like look. The combination of two different thicknesses of yarn dyed in different beautiful colours gives the textile a prominent depth.

How are we circular?

- _FSC-certified
- _recycled materials
- _designed for disassembly

EDVARD

JONAS

Jonas Edvard is a Danish designer working and living in Copenhagen Denmark. He graduated from the Royal Danish Academy, School of Design a MA in product design. With an alchemist's approach to the design process Edvard experiments with natural resources and creates products where the perception of the material places the object in a new context. With a renewed focus on the aesthetic value and functionality of raw materials Jonas Edvard explores the possibilities of sustainable design. His work is focused on a research into raw and natural materials, the history of their use and the future of their existence. Through material experimentation Jonas creates new materials combinations, which interacts with our understanding of shape and matter and the life cycles of materials in our daily life.

How are we circular?

_raw & natural materials
_organic

RUHWALD

RIKKE

Global warming, consumerism, pollution, decay and conservation are keywords in Rikke Ruhwald's GUILT TRIP project.

The materials are discarded from homes, from the sea and from Louis Poulsen's production of the Danish design icon the Artichoke Lamp by Poul Henningsen. All sculptures are balancing the contrast between Danish design tradition and organic driftwood, industrial metallic objects fixed in transparent recycled plastic casts.

Rikke Ruhwald emerges from a Parisian background as a fashion designer for JC de Castelbajac, Sonia Rykiel and Christian Lacroix. By relocating to the Danish seaside this body of work illustrates how she composes found objects with the non-chalance of fashion draping and styling.

How are we circular?

_recycled plastic casts
_reused materials

FORM X REFINE

In Form & Refine we have a vision to reduce our CO2 footprints to a minimum. One of our takes to this is to look on the „indirect“ sources by minimizing the fuel burned when transporting the raw material to the production. Therefore, we always choose local materials with neighboring local workshops.

Strap Sofa Table is made by PEFC certified wood grown responsible in Damsbo Forrest in Denmark, cut up on a Danish Sawmill and processed in a Danish Workshop.

By having a close collaboration with Damsbo Forrest we also ensure long lasting values like slow growth to improve density and containing more natural acids to be able to withstand the wear over the time.

How are we circular?

- _local materials
- _PEDC certified
- _longlasting design

BOLIA

Swing is made in moulded veneer and solid wood that is biodegradable and shaped by handcraft. The back is handled on a CNC machine, ensuring longevity and uniqueness for each chair, and the wood stems from sustainable forestry, making Swing a conscious chair built to last.

The back is made in moulded veneer handled on a CNC machine, the frame is solid, organic wood from sustainable forestry, and the upholstered seat is dressed in traceable leather ensuring quality and transparency.

Swing is GS-tested for public use and will stand strong in both airports and restaurants, and as a constant around your dining table for generations to come.

How are we circular?

- _longlasting design
- _from sustainable forestry
- _strong for public use

HAY

NOBODY is a chair without structural frame, or 'no body' – it is supported solely by the inherent strength of textile alone.

NOBODY is produced in one single process by thermo-pressing the polymer fibre - PET felt mat. The production process neither demands any additives like glues or resins, nor any additional materials like screws or reinforcements. PET felt is 100% recyclable material, significant part of which is produced of recycled cola/soda/water bottles, that are being not just Recycled but Upcycled.

After the chair's life is over, being made of only one material, it doesn't demand the separation of materials for recycling and can be again flaked, then extruded into bi-component PET fibre to produce form felt/fleece and then NOBODY chair can be moulded again.

How are we circular?

- _reused materials
- _from upcycled materials
- _longlasting design
- _designed for recycling

REF DESIGN

Cyllilight is a minimalistic pendant with the idea that it should be beautiful both when it is turned on and off. The pendant is made from untreated oak, reused copper and fabric cable – all sub-elements can easily be separated and reused. This element also makes the pendant easy to upgrade and repair. The environmentally friendly LED light is adjustable, making this lamp the perfect choice above your dining table, work area or as a cozy interior element in your livingroom.

How are we circular?

- _reused materials
- _longlasting design
- _designed for recycling
- _easy to repair or upgrade

WEHLERS

Wehlers is a sustainable design furniture brand established in 2014 for the conscious consumers who refuses to compromise on design and quality.

Our philosophy is simple; we don't think the world needs more designed furniture – however, we do think that it needs more options for conscious consumption.

The furniture we design is all made with recycled or sustainable sourced materials and circular economy is an important part of our design solution.

Wehlers insists that our furniture is repaired, reused and recycled during and after “end of life cycle”. Adding full circular economy in collaboration with suppliers and customers.

During 3 days of Design Wehlers proudly introduce R.U.M., short for “Re-Used Materials”, a chair made entirely from ocean plastic waste and recycled steel, in collaboration with CF Møller Design & Letbæk A/S.

How are we circular?

_designed for disassembly
_B-Corperation Certified
_respect, repair, reuse,
recycle, remember,
it is that simple!

LÜBECH

LIVING

Lübech Living is inspired by the global trendsetting market and we are constantly striving to be on edge with news and innovative design collections. The philosophy of our product portfolio is a strong wish and urge to be able to help our customers decorate their stores and the end users their houses with functional sustainable products. All products are carefully selected with focus on sustainability, craftsmanship, natural resources as well as their unique story which add extra soul and value. Materials used are recycled paper, plastic, glass, leather and wood.

How are we circular?

- _100% recycled materials
- _handmade
- _biodegradable
- _solar energy
- _womens project in Sri Lanka

HANSEN LIVING

Fagerstok children's furniture is designed by industrial designer Jakob Agger for HANSEN Living ApS.

Jakob Agger has created robust and sustainable children's furniture that can withstand being used by children of all ages to sit, climb and play with.

With Fagerstok children's and play furniture, HANSEN Living wants to contribute to a sustainable future partly by creating furniture in sustainable wood materials that are solid and durable, and partly by producing them in a recyclable material to give them a second life.

How are we circular?

- _longlasting materials
- _fsc-certified
- _designed for recycling
- _take-back service

RANDERS+RADIUS

Randers+Radius' core business is the development and production of furniture in close collaboration with designers and architects for the contract market. The customer segment includes public and private companies in Denmark and on the international market for interior furnishing of corporate dining facilities, meeting, lounge and waiting areas, as well as furnishings for educational environments.

Our roots go back to 1957, when our first chair was produced. Many years of experience with a constant focus on customer requirements and needs have made us one of the leading players in the furniture industry. We seek to epitomise unique design, focus on sustainability, furniture with a long service life and a constant awareness of market trends.

How are we circular?

- _recyclable
- _recycle PET water bottles
- _longlasting design

UPCYCLING SCANDINAVIA

Upcycling Scandinavia develops and sells products consisting of 100 per cent upcycled paper, cardboard and plastic. We do this using new production methods that not only upcycle waste but also involve rethinking our use of energy to enable us to make use of all resources. Our products are reusable and can therefore be part of the manufacture of new products, thus ensuring that our total volume of waste does not increase with time and that we limit our consumption of raw material. Upcycling Scandinavia works in a focused manner in accordance with the UN's 17 Global Goals and helps private businesses and public institutions to achieve their climate action goals.

After use, the chairs can be recycled to produce new chairs, or upcycled to completely new products. We take it back.

How are we circular?

- _reused materials
- _longlasting design
- _designed for disassembly

RUG

SOLID

At Rug Solid we are constantly pushing the boundaries for sustainability and challenging the norms of design. It is a tough process involving a lot of experimentation and failure. However, when finding sustainable solutions for challenging design you cannot be afraid of failure.

For the Circular Furniture and Interior Design exhibition, we would like to present our new designs we have worked on for the past years. These designs are made of sustainable materials such as up cycled wool blends, Italian leather off-cuts and bamboo with recycled cotton backings.

We have worked on these designs with vigorous passion, perfecting every detail. We believe sustainable design should never be 'as good as', it should be the standard when designing tomorrow.

How are we circular?

- _reused materials
- _longlasting design
- _designed for disassembly

MUUTO

Muuto is rooted in the Scandinavian design tradition, characterized by enduring aesthetics, functionality, craftsmanship and an honest expression. By expanding this heritage with forward-looking materials, techniques and bold creative thinking, our ambition is to deliver new perspectives on Scandinavian design. Examples of our new perspectives include the Fiber Chair family and Under The Bell Pendant Lamp, designed by Iskos-Berlin.

The Fiber Chair Family is made of an innovative wood fiber composite with up to 25% wood fibers, mixed with polypropylene, for a tactile expression and matte touch. The composite can be recycled for future reuse in production with a wood fiber composite. The Under The Bell Pendant Lamp is made of up to 80% recycled PET fibers, largely sourced from plastic bottles and then produced in a single process by thermo-pressing polymer fiber into PET felt mat; PET fibers are not only recycled but also upcycled.

How are we circular?

- _reused materials
- _longlasting design
- _designed for disassembly

ENCODED

Encoded is a Danish designed furniture and interior brand that embraces natural aesthetics. We create a uniquely designed collection that is shaped and crafted by hand. The designs are truly unique items with character and an urban look expressing authenticity and honesty. The collection is made of braided cow leather, recycled safety belts and certified untreated teakwood. The safety belts ensure flexibility and support the leather straps which results in a long-lasting design.

We are very conscious about the quality of the materials we use, their durability, the timelessness of the pieces and the conditions in which they are manufactured. Throughout the production chain, our partners secure that the teakwood is properly certified.

How are we circular?

- _reused materials:
- _safety belts from cars
- _longlasting design
- _certified teakwood

THORS DESIGN

Thors Design creates handmade, sustainable furniture and interior decoration from recycled, maritime patinated Azobé wood sourced in decommissioned Danish wharves. For decades the rustic harbour wood has been partially submerged in the Danish sea where the exceptional strong African Azobé wood has taken a beating from the ferries docking in the ice cold salt water. It has been hardened and patinated over time, and no two pieces of wood are the same. Thors Design furniture has a life expectancy of between 50 and 100 years, even outside. There are virtually no costs for maintenance, as the furniture only requires soap and water when cleaning. The wood is verified by COWI to contain only natural oils and certified by FSC as recycled 100%.

How are we circular?

- _reused materials
- _made to last
- _designed for recycling
- _leasing possible

FURNITURE

2 RETHINK

2RETHINK furniture was founded i 2009 during the COP15 Eco summit in Copenhagen. The company mission is to create unique sustainable interiors with use of unique eco materials. During 2018 the company partnered with Architect Martin Hartmann for the project named “Danish DNA”.

Danish DNA is a project with a mission to designers, architects and company owners to use reclaimed materials in their interior projects.

During early 2019 Danish DNA were approached by Miljøstyrelsen and commissioned to help on their new office location in Odense. The task was to develop a beautiful wall panel entirely made of reclaimed wood sourced locally within Funen. The result is what you see now.

How are we circular?

_eco materials
_reclaimed wood

WE:DO:WOOD

Based on a set of shared sustainability values, We Do Wood, Lendager UP and Northside Festival launches a new outdoor bench and table at Northside Festival 2019. UpNorth is designed from waste material sourced by Lendager UP. The bench and tabletop is made from assorted douglas wood from Dinesen and the base is made from pine wood used for transporting the heavy tunnel elements for the construction of the Copenhagen Metro. The douglas wood is treated with linseed oil and the pine wood has been undergoing a thermo-treatment.

The project started in September 2018 and all the modules will be produced during May 2019, Northside Festival starts on June 6, 2019. After Northside Festival, the UpNorth pieces will continue to Tindbox Festival.

How are we circular?

- _fulfills strict requirements
- _reused materials
- _can be leased

EDISON

& CO.

Edison & Co is a oneman business run by Henrik Stahlhut. I mainly focus on recycled interior. Both vintage finds and my own designs made out of recycled materials. At 3daysofdesign I have chosen to display my own upcycle lamps. I design and handbuild all the lights myself from in my workshop and shop on Vesterbro, Cph.

The materials are a mix of old scrap metal that I sort from big industrial containers and buy per kilo. I often end up buying old ragged pieces of solid brass and copper since it looks awesome when you add a golden bulb to the material. Then I add some spareparts from older vintage mid century lamps and it all comes out as beautiful unique pieces. I love the process. I love the lamps. And it really does make sense to design and build new interior this way.

How are we circular?

- _recycled materials
- _upcycled design
- _inspire others